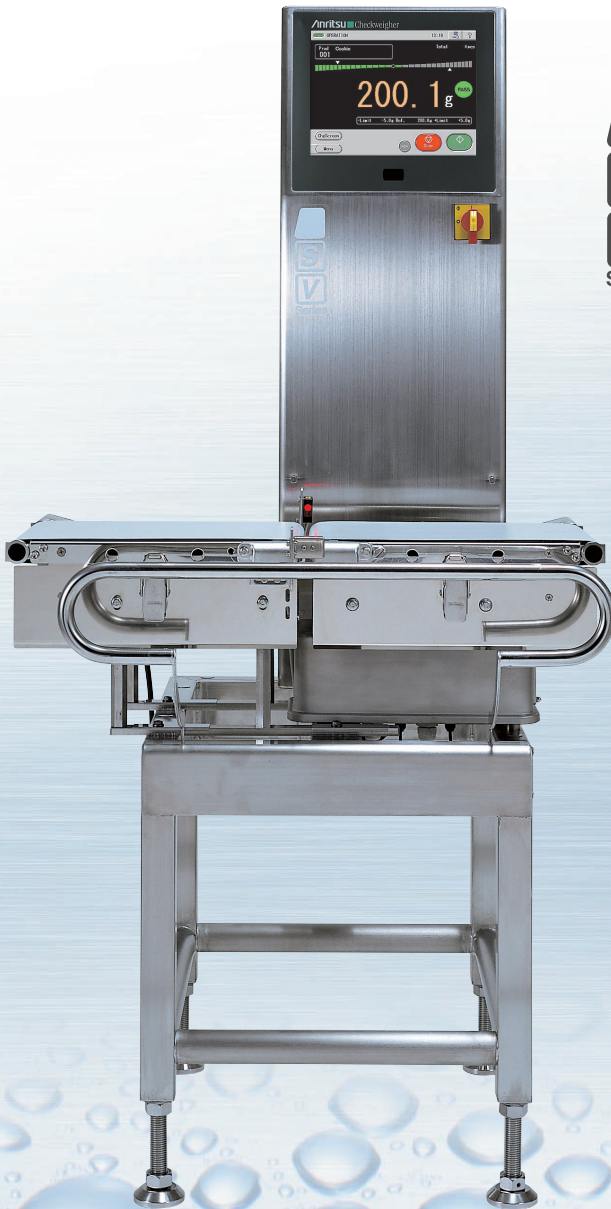


Anritsu



SVi Series

Checkweigher

Guaranteeing Product Safety and Quality Control

Adopts superior reliable technology to assure product safety and security
 Safety-designed with IP66 conformance for improved water resistance and cleanability to meet HACCP and GMP requirements

S & V is the key phrase for evolution

S
Safety

Pursuing supreme safety and outstanding reliability

V
Validation

For higher precision and more reliable weighing

Can be used by anyone to weigh safely, precisely and reliably
 In developing this concept, everything including the basic structure, functions, and materials has been reviewed from the fundamental viewpoints of machine manufacturing. These Checkweighers offer unparalleled safety and validation.

IP66 (Waterproof design)
 Dustproof and waterproof protection level/
 Able to withstand water jet from 12.5-mm nozzle at 100 ℓ /minute for 3 minutes at distance of 2.5 to 3 m in all directions

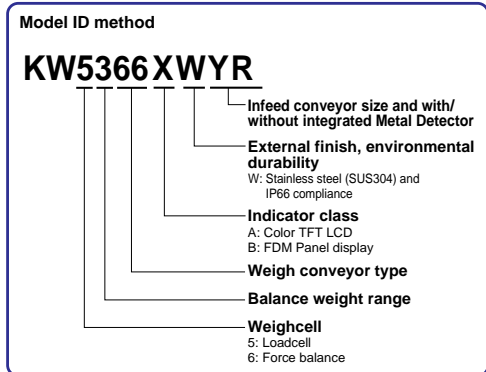
IP67 (Immersible design)
 Dustproof and waterproof protection level/
 Able to withstand immersion in water at depth of 15 cm to 1 m for 30 minutes

KW5472AW3R
 Checkweigher with
 Metal Detector

KW4103AW
 Rejector
 (option)

KW4866BW
 Rejector
 (option)

KW5366BW66



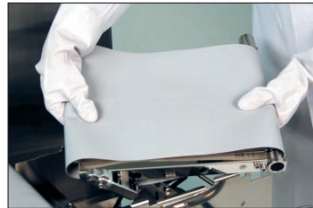


HACCP

Waterproof Design with Special Consideration for Cleaning

1. Constructed with excellent water resistance for full washdown

- Sanitary stainless finish and unique waterproof stainless motor.
- Fully washable design due to waterproof construction conforming to IP66. Higher level IP67 waterproofing standard for conveyor and weighcell.
- Easy tool-free conveyor and conveyor belt removal and fitting for simple and quick cleaning.
- Conveyor belt can be sterilized in boiling water.



One-touch removal and attachment of conveyor and motor from and to frame



2. Simplifies maintenance work

- Open-frame design prevents dust accumulation.
- Easy belt adjustment by belt auto-tension mechanism (eliminates adjustment work) and use of profiled belt (eliminates belt mis-tracking).



Open-frame design

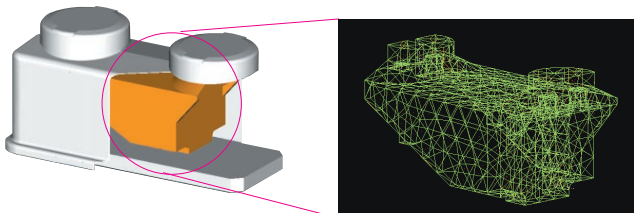


Easy washable conveyor belt

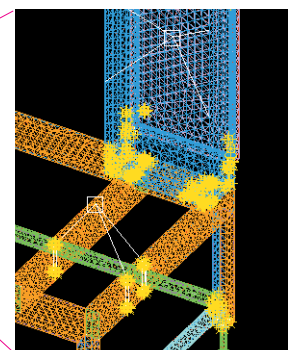
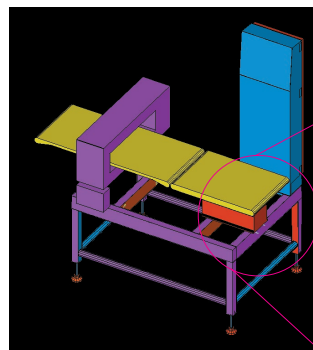
High speed and high accuracy

Anritsu Unique and Accurate Measurement Technology

- Fast and accurate high-rigidity design and Anritsu's unique signal processing technologies (Best accuracy: $3\sigma: \pm 0.2 \text{ g}$).
- Higher accuracy model with Force Balance added to range.



Weighcell rigidity simulation



Frame rigidity simulation

Validation functions

Easy and Accurate Validation Functions

1. SMART* function automatically checks for abnormal machine state

- Notifies operator of hardware and software abnormalities
- The rejected product flow verification function (option) checks that faulty products are not feeding to the PASS side.

* SMART Function (Self-Monitoring Analysis & Reporting Technology)

2. Validation result is automatically recorded

- Operation history, alarm history and calibration history are automatically recorded.
- Strengthened Indicator functions such as statistics and history functions

3. Two types of easy-to-see indicator matching application

- A-Type with large easy-to-see 10.4 inch color TFT screen for graphical applications and B-Type with high cost efficiency using direct function keys
- Better operating ability by combining metal detector (MD) indication functions into CW Indicator screen
Combined management and printing of both MD and CW functions (with built-in MD)

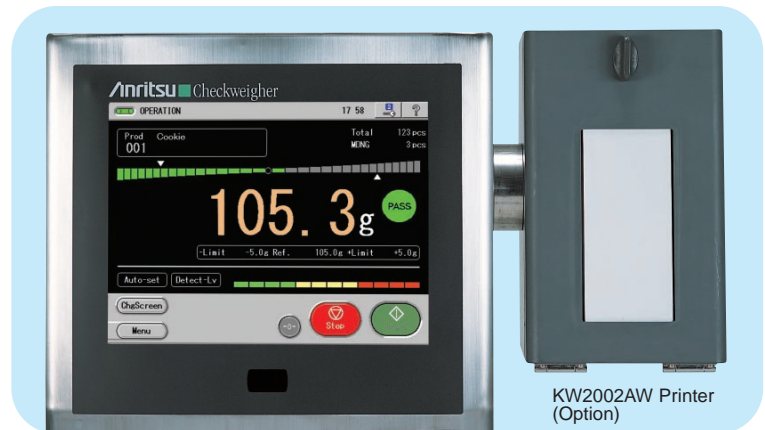
KW3001A **A**-Type Indicator

Various screens including statistical and data screens as well as help guidance screens are displayed instantly by Indicator especially for HACCP and GMP.

Main Features

- 10.4-inch easy-to-read color TFT LCD screen
- Touch panel and Windows OS graphical interface for simple operation
- Pop-up displays for easy setting
- Customized screens for commonly used functions
- Metal Detector settings from same screen (when Metal Detector integrated or connected)
- Memory presettings for up to 100 products

* Windows is a registered trademark of Microsoft Corporation in the USA and other countries.



Basic Screen (with built-in MD)

KW2002AW Printer (Option)

KW3002A **B**-Type Indicator

Easy-to-use direct function keys and offers high cost efficiency.

Main Features

- Interactive operation function
Guidance screens for easy operation with fewer errors
- Production status monitoring
Easy-to-understand graphical displays of production status such as Counter, Counter details, Histogram, \bar{X} chart.
- Single operation panel
When a Metal Detector is integrated, contamination and weight checks can be performed from the same panel.

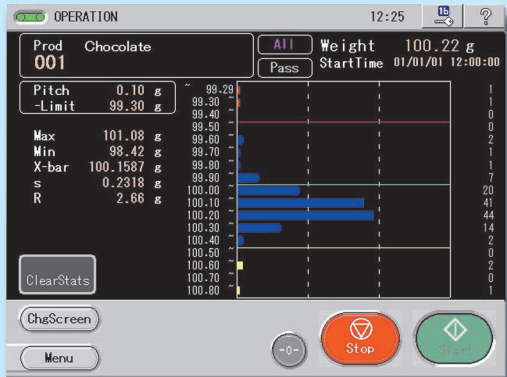


Basic Screen (with built-in MD)

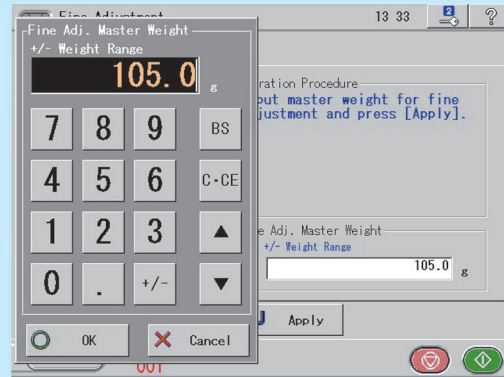
KW2002AW Printer (Option)

Example of A-Type Indicator display

Statistics screen



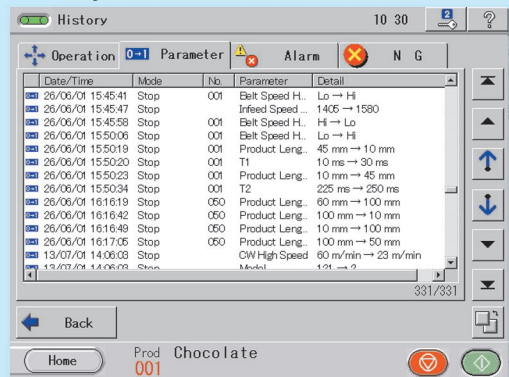
Pop-up screen



Metal Detector level change screen



History screens Parameter history

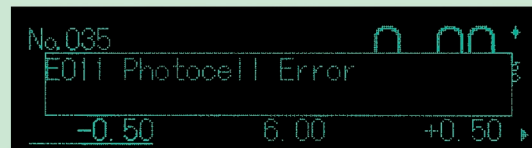


Example of B-Type Indicator display

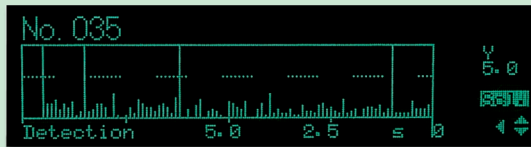
Main screen



Error screen



Product monitor screen



Mean value control screen (X-bar)



Enlarged screen



SVi Series Checkweigher

Specifications

Model	KW5265AW65 KW5265BW65	KW5366AW66 KW5366BW66	KW5472AW72 KW5472BW72	KW5476AW76 KW5476BW76	KW5677AW77 KW5677BW77	KW5678AW77 KW5678BW77
Weight range	6 to 600 g	12 to 1200 g	30 to 3000 g	30 to 3000 g	60 to 15000 g	60 to 15000 g
Max. accuracy (3 σ) ^{Note 1}	± 0.2 g	± 0.2 g	± 0.5 g	± 0.5 g	± 2 g	± 2 g
Max. speed ^{Note 1}	330 products / min	220/270 products / min ^{Note 4}	160 [220] products / min ^{Note 3}	120 [155] products / min ^{Note 3}	70 products / min	50 [90] products / min ^{Note 3}
Display	A type: 10.4-inch color TFT LCD, B type: FDM panel display					
Operation method	A type: Touch panel, B type: Flat panel key					
Indication range	604.5 g	1204.5 g	3009 g	3009 g	15045 g	15045 g
Scale interval	0.1 g	0.1 g	0.2 g / 3000 g 0.1 g / 1200 g	0.2 g / 3000 g 0.1 g / 1200 g	1 g / 15000 g 0.5 g / 6000 g, 0.2 g / 3000 g	1 g / 15000 g 0.5 g / 6000 g, 0.2 g / 3000 g
Limit range	Within indication range					
Preset memory	Max. 100 products					
Classification	2 or 3 ways					
Product size ^{Note 2}	Width W	20 to 160 mm	20 to 230 mm	20 to 230 mm	20 to 350 mm	20 to 350 mm
	Length L	60 to 200 mm	60 to 300 mm	76 to 300 mm	76 to 400 mm	76 to 400 mm
	Height H	5 to 175 mm	5 to 175 mm	5 to 175 mm	5 to 400 mm	5 to 400 mm
Belt speed	9 to 97 m/min	9 to 82 [9 to 97] m/min ^{Note 3}	7 to 60 [9 to 82] m/min ^{Note 3}	7 to 65 [9 to 83] m/min ^{Note 3}	5 to 38 m/min	5 to 36 [7 to 64] m/min ^{Note 3}
Power requirements	100 to 120 Vac +10% -15% or 200 to 240 Vac +10% -15%, single phase, 50/60 Hz, 300 VA, rush current 62 A (typ.) (20 ms or less)					
Mass	64 kg	67 kg	68 kg	84 kg	84 kg	87 kg
Environmental conditions	0° to 40°C (variation not to exceed 5°C/h to maintain accuracy), relative humidity 30% to 85%, no condensation					
Protection class	IP66 compliance					
Casing material	Stainless steel (SUS304)					

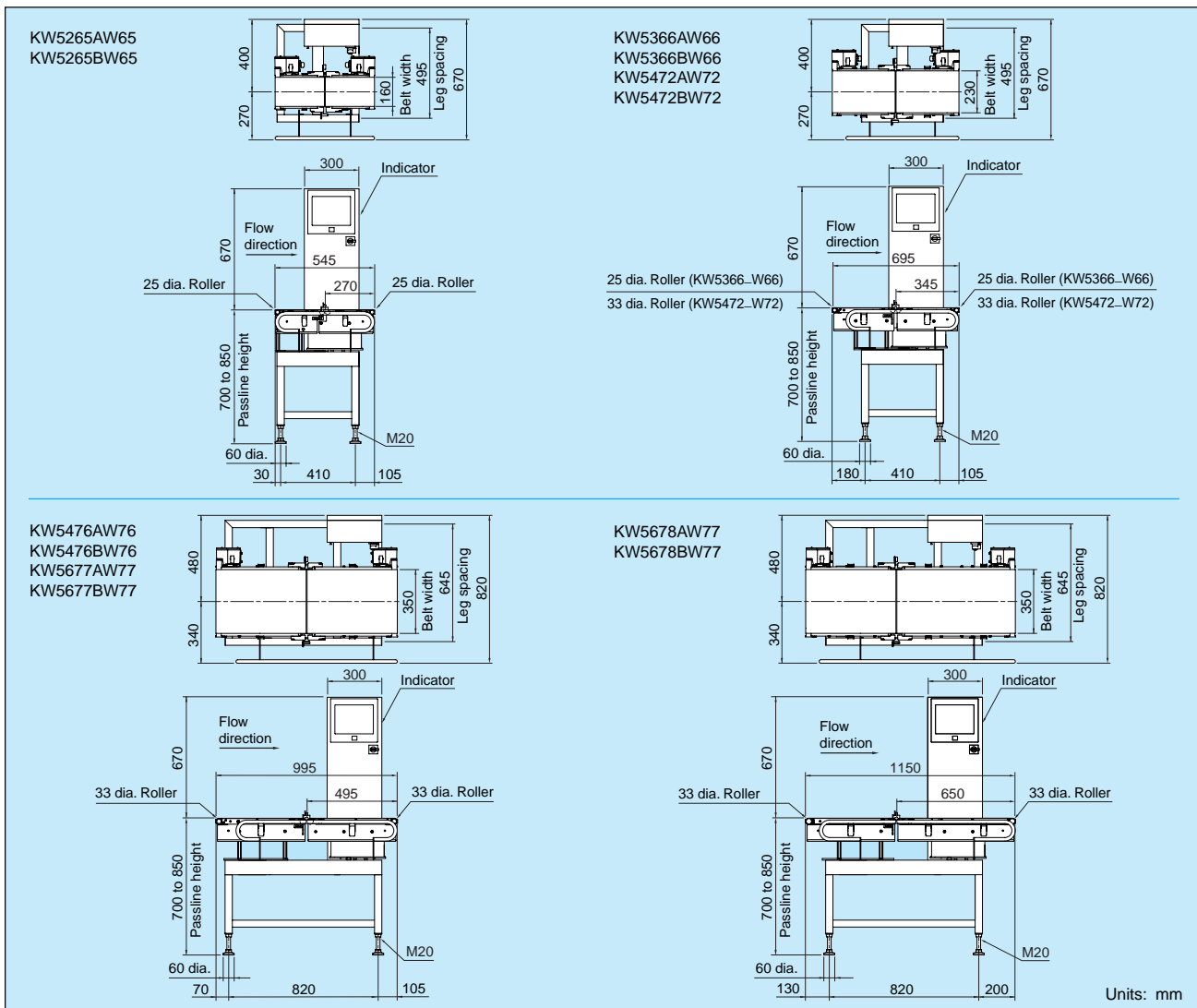
Note 1: The speed and accuracy may change depending on the checked product type and rejector type.

Note 2: The checked product size depends on the rejector type; select the rejector in line with your needs—consult us about semi-transparent and transparent products.

Note 3: Functions in [] are optional. The upper limit of the weight range changes according to the operating environment.

Note 4: The upper limit of the 270 products/minute weight measurement range changes according to the operating environment.

External Dimensions



SVi Series Checkweigher with Metal Detector

Specifications

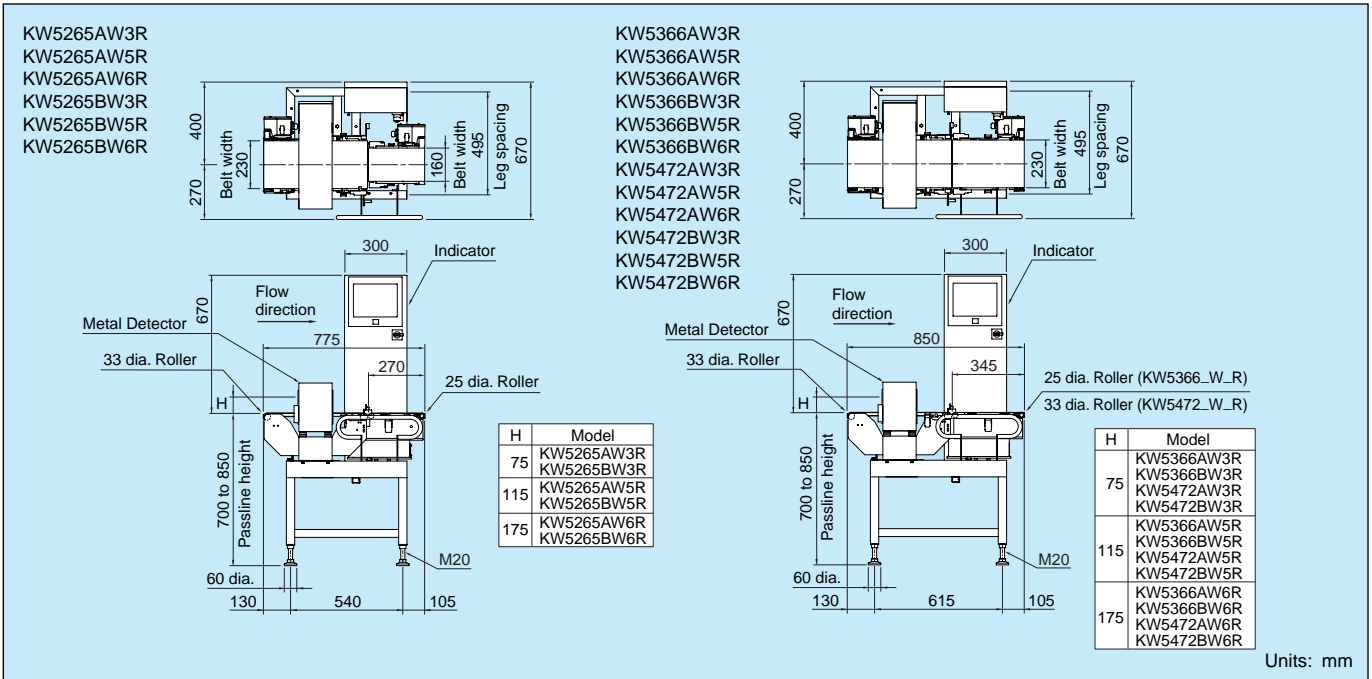
Model	KW5265AW3R / KW5265AW5R / KW5265AW6R KW5265BW3R / KW5265BW5R / KW5265BW6R		KW5366AW3R / KW5366AW5R / KW5366AW6R KW5366BW3R / KW5366BW5R / KW5366BW6R		KW5472AW3R / KW5472AW5R / KW5472AW6R KW5472BW3R / KW5472BW5R / KW5472BW6R	
Weight range	6 to 600 g		12 to 1200 g		30 to 3000 g	
Max. accuracy (3 σ) ^{Note 1}	± 0.2 g		± 0.2 g		± 0.5 g	
Max. speed ^{Note 1}	280 products / min		220 products / min		160 [220] products / min ^{Note 3}	
Display	A type: 10.4-inch color TFT LCD, B type: FDM panel display					
Operation method	A type: Touch panel, B type: Flat panel key					
Indication range	604.5 g		1204.5 g		3009 g	
Scale interval	0.1 g		0.1 g		0.2 g / 3000 g, 0.1 g / 1200 g	
Limit range	Within indication range					
Preset memory	Max. 100 products					
Classification	2 or 3 ways					
Product size ^{Note 2}	Width W	20 to 160 mm		20 to 230 mm		20 to 230 mm
	Length L	68 to 200 mm		76 to 300 mm		76 to 300 mm
	Height H	3R: 5 to 75 mm 5R: 5 to 115 mm 6R: 5 to 175 mm				
Belt speed	9 to 82 m/min		9 to 82 m/min		7 to 60 [9 to 82] m/min ^{Note 3}	
Power requirements	100 to 120 Vac +10% -15% or 200 to 240 Vac +10% -15%, single phase, 50/60 Hz, 300 VA, rush current 62 A (typ.) (20 ms or less)					
Mass	3R: 103 kg 5R: 105 kg 6R: 106 kg		3R: 104 kg 5R: 106 kg 6R: 107 kg		3R: 105 kg 5R: 107 kg 6R: 108 kg	
Environmental conditions	0° to 40°C (variation not to exceed 5°C/h to maintain accuracy), relative humidity 30% to 85%, no condensation					
Protection class	IP66 compliance					
Casing material	Stainless steel (SUS304)					

Note 1: The speed and accuracy may change depending on the checked product type and rejector type.

Note 2: The checked product size depends on the rejector type; select the rejector in line with your needs—consult us about semi-transparent and transparent products.

Note 3: Functions in [] are optional. The upper limit of the weight range changes according to the operating environment.

External Dimensions



SVi Series Checkweigher with Metal Detector

Specifications

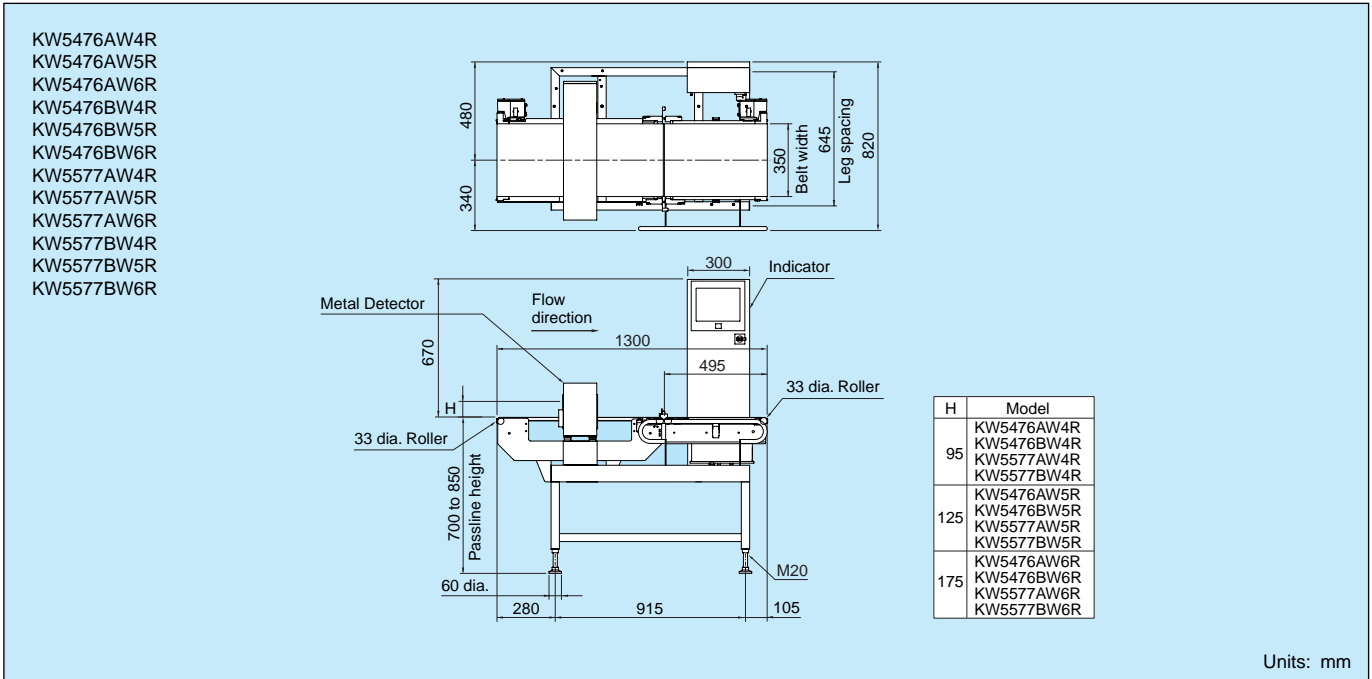
Model	KW5476AW4R / KW5476AW5R / KW5476AW6R KW5476BW4R / KW5476BW5R / KW5476BW6R		KW5577AW4R / KW5577AW5R / KW5577AW6R KW5577BW4R / KW5577BW5R / KW5577BW6R	
Weight range	30 to 3000 g		60 to 6000 g	
Max. accuracy (3 σ) ^{Note 1}	± 0.5 g		± 1.5 g	
Max. speed ^{Note 1}	120 [155] products / min ^{Note 3}		70 products / min	
Display	A type: 10.4-inch color TFT LCD, B type: FDM panel display			
Operation method	A type: Touch panel, B type: Flat panel key			
Indication range	3009 g		6018 g	
Scale interval	0.2 g / 3000 g, 0.1 g / 1200 g		0.5 g / 6000 g, 0.2 g / 3000 g	
Limit range	Within indication range			
Preset memory	Max. 100 products			
Classification	2 or 3 ways			
Product size ^{Note 2}	Width W	20 to 350 mm		20 to 350 mm
	Length L	76 to 400 mm		76 to 400 mm
	Height H	4R: 5 to 95 mm 5R: 5 to 125 mm 6R: 5 to 175 mm		
Belt speed	7 to 65 [9 to 83] m/min ^{Note 3}		5 to 38 m/min	
Power requirements	100 to 120 Vac +10% -15% or 200 to 240 Vac +10% -15%, single phase, 50/60 Hz, 300 VA, rush current 62 A (typ.) (20 ms or less)			
Mass	4R: 133 kg 5R: 135 kg 6R: 137 kg		4R: 133 kg 5R: 135 kg 6R: 137 kg	
Environmental conditions	0° to 40°C (variation not to exceed 5°C/h to maintain accuracy), relative humidity 30% to 85%, no condensation			
Protection class	IP66 compliance			
Casing material	Stainless steel (SUS304)			

Note 1: The speed and accuracy may change depending on the checked product type and rejector type.

Note 2: The checked product size depends on the rejector type; select the rejector in line with your needs—consult us about semi-transparent and transparent products.

Note 3: Functions in [] are optional. The upper limit of the weight range changes according to the operating environment.

External Dimensions



SVi Series Checkweigher

Specifications

Model	KW6265AW65 KW6265BW65	KW6366AW66 KW6366BW66	KW6472AW72 KW6472BW72
Weight range	6 to 600 g	12 to 1200 g	30 to 3000 g
Max. accuracy (3 σ) ^{Note 1}	±0.1 g	±0.1 g	±0.1 g
Max. speed ^{Note 1}	330 products / min	220/270 products / min ^{Note 4}	160 [220] products / min ^{Note 3}
Display	A type: 10.4-inch color TFT LCD, B type: FDM panel display		
Operation method	A type: Touch panel, B type: Flat panel key		
Indication range	601.8 g	1201.8 g	3004.5 g
Scale interval	0.02 g	0.05 g / 1200 g 0.02 g / 600 g	0.1 g / 3000 g, 0.05 g / 2000 g 0.05 g / 1200 g, 0.02 g / 600 g
Limit range	Within indication range		
Preset memory	Max. 100 products		
Classification	2 or 3 ways		
Product size ^{Note 2}	Width W	20 to 160 mm	20 to 230 mm
	Length L	60 to 200 mm	60 to 300 mm
	Height H	5 to 175 mm	5 to 175 mm
Belt speed	9 to 97 m/min	9 to 82 [9 to 97] m/min ^{Note 3}	7 to 60 [9 to 82] m/min ^{Note 3}
Power requirements	100 to 120 Vac +10% -15% or 200 to 240 Vac +10% -15%, single phase, 50/60 Hz, 300 VA, rush current 62 A (typ.) (20 ms or less)		
Mass	65 kg	68 kg	69 kg
Environmental conditions	0° to 40°C (variation not to exceed 5°C/h to maintain accuracy), relative humidity 30% to 85%, no condensation		
Protection class	IP66 compliance		
Casing material	Stainless steel (SUS304)		

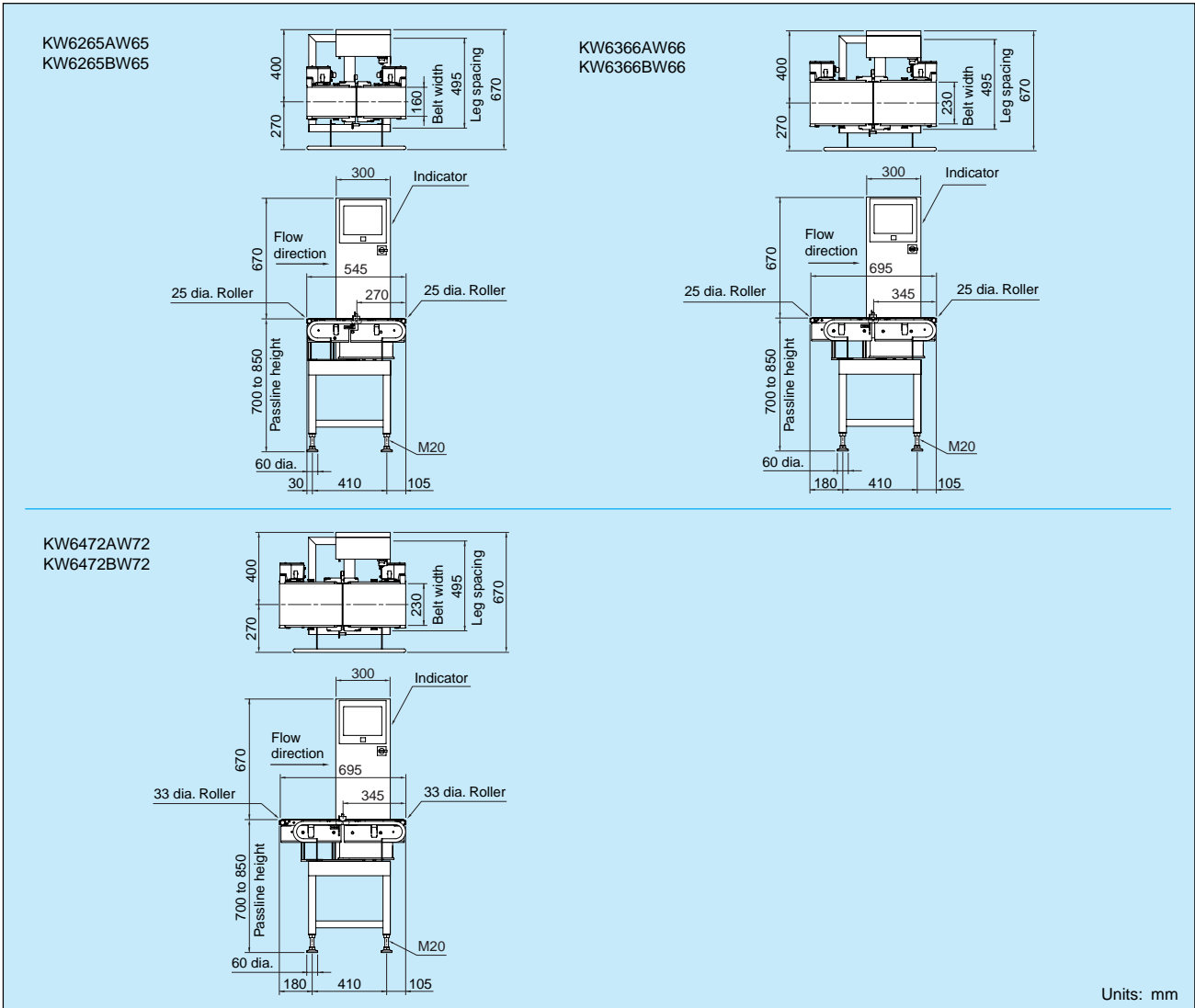
Note 1: The speed and accuracy may change depending on the checked product type and rejector type.

Note 2: The checked product size depends on the rejector type; select the rejector in line with your needs—consult us about semi-transparent and transparent products.

Note 3: Functions in [] are optional. The upper limit of the weight range changes according to the operating environment.

Note 4: The upper limit of the 270 products/minute weight measurement range changes according to the operating environment.

External Dimensions



SVi Series Checkweigher with Metal Detector

Specifications

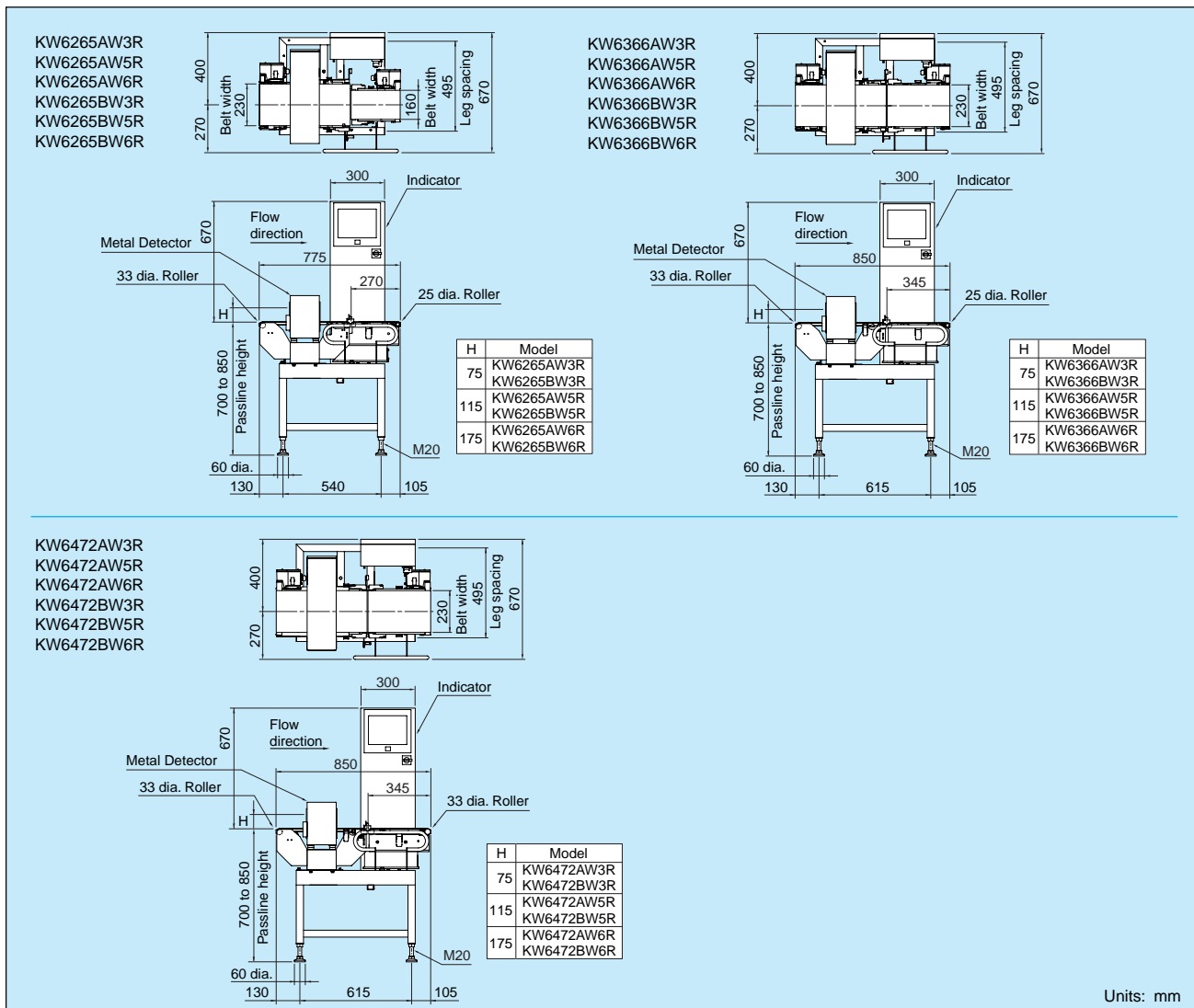
Model	KW6265AW3R / KW6265AW5R / KW6265AW6R KW6265BW3R / KW6265BW5R / KW6265BW6R		KW6366AW3R / KW6366AW5R / KW6366AW6R KW6366BW3R / KW6366BW5R / KW6366BW6R		KW6472AW3R / KW6472AW5R / KW6472AW6R KW6472BW3R / KW6472BW5R / KW6472BW6R		
Weight range	6 to 600 g		12 to 1200 g		30 to 3000 g		
Max. accuracy (3 σ) ^{Note 1}	±0.1 g		±0.1 g		±0.1 g		
Max. speed ^{Note 1}	280 products / min		220 products / min		160 [220] products / min ^{Note 3}		
Display	A type: 10.4-inch color TFT LCD, B type: FDM panel display						
Operation method	A type: Touch panel, B type: Flat panel key						
Indication range	601.8 g		1201.8 g		3004.5 g		
Scale interval	0.02 g		0.05 g / 1200 g, 0.02 g / 600 g		0.1 g / 3000 g, 0.05 g / 2000 g, 0.05 g / 1200 g, 0.02 g / 600 g		
Limit range	Within indication range						
Preset memory	Max. 100 products						
Classification	2 or 3 ways						
Product size ^{Note 2}	Width W	20 to 160 mm		20 to 230 mm		20 to 230 mm	
	Length L	68 to 200 mm		68 to 300 mm		76 to 300 mm	
	Height H	3R: 5 to 75 mm 5R: 5 to 115 mm 6R: 5 to 175 mm					
Belt speed	9 to 82 m/min		9 to 82 m/min		7 to 60 [9 to 82] m/min ^{Note 3}		
Power requirements	100 to 120 Vac +10% -15% or 200 to 240 Vac +10% -15%, single phase, 50/60 Hz, 300 VA, rush current 62 A (typ.) (20 ms or less)						
Mass	3R: 104 kg 5R: 106 kg 6R: 107 kg		3R: 105 kg 5R: 107 kg 6R: 108 kg		3R: 106 kg 5R: 108 kg 6R: 109 kg		
Environmental conditions	0° to 40°C (variation not to exceed 5°C/h to maintain accuracy), relative humidity 30% to 85%, no condensation						
Protection class	IP66 compliance						
Casing material	Stainless steel (SUS304)						

Note 1: The speed and accuracy may change depending on the checked product type and rejector type.

Note 2: The checked product size depends on the rejector type; select the rejector in line with your needs—consult us about semi-transparent and transparent products.

Note 3: Functions in [] are optional. The upper limit of the weight range changes according to the operating environment.

External Dimensions



Rejector

Flipper type

Model	KW4103AW	KW4104AW
Classification	3	
Max. product size	220 W×200 H×300 L mm	350 W×500 H×600 L mm
Max. product weight	3000 g	10 kg ^{Note 1}
Max. speed	150 products / min	70 products / min
Belt speed	10 to 102 m/min	10 to 77 m/min
Power requirements	100 to 120 Vac or 200 to 240 Vac +10% -15%, single phase, 50/60 Hz, 200 VA	
Mass	45 kg	70 kg
Size	700 W×700 to 800 H×420 D mm	860 W×700 H×565 D mm
Air requirements	0.4 to 0.9 MPa, 4 ℓ /min [A.N.R.]	
Air supply inlet	Nylon tube having external 6 mm dia.	
Protection class	IP66 compliance	
Casing material	Stainless steel (SUS304) excluding some parts	

Note 1: Max. product weight may change depending on the speed.



Air Jet type

Model	KW4866BW
Classification	2
Max. product size	230 W×160 H×300 L mm
Max. product weight	300 g
Max. speed	220 products / min
Belt speed	9 to 91 m/min
Power requirements	Supplied from Checkweigher, 200 VA
Mass	16 kg
Size	440 W×520 H×400 D mm
Air requirements	0.5 to 0.9 MPa, 16 ℓ /min [A.N.R.]
Air supply inlet	Nylon tube having external 10 mm dia.
Protection class	IP66 compliance
Casing material	Stainless steel (SUS304) excluding some parts



Dropout type

Model	KW4671BW	KW4672BW
Classification	2	
Max. product size	160 W×100 H×240 L mm	230 W×130 H×300 L mm
Max. product weight	1200 g	3000 g
Max. speed	80 products / min	70 products / min
Belt speed	7 to 36 m/min	
Power requirements	Supplied from Checkweigher, 200 VA	
Mass	16 kg	18 kg
Size	365 W×560 H×360 D mm	440 W×560 H×430 D mm
Air requirements	0.4 to 0.9 MPa, 30 ℓ /min [A.N.R.]	
Air supply inlet	Nylon tube having external 6 mm dia.	
Protection class	IP66 compliance	
Casing material	Stainless steel (SUS304) excluding some parts	



Dropout type

Model	KW4671CW	KW4672CW	KW4676CW	KW4671DW	KW4672DW	KW4676DW
Classification	2					
Max. product size	160 W×100 H× 240 Lmm	230 W×130 H×300 L mm	350 W×210 H×450 L mm	160 W×100 H×240 L mm	230 W×130 H×300 L mm	350 W×210 H×450 L mm
Max. product weight	1200 g	3000 g	3000 g	1200 g	3000 g	3000 g
Max. speed	80 products / min	70 products / min	30 products / min	80 products / min	70 products / min	30 products / min
Belt speed	7 to 36 m/min		7 to 26 m/min	7 to 36 m/min		7 to 26 m/min
Power requirements	Supplied from Checkweigher, 200 VA			100 to 120 Vac or 200 to 240 Vac +10% -15%, single phase, 50/60 Hz, 200 VA		
Mass	23 kg	25 kg	33 kg	27 kg	29 kg	37 kg
Size	273 W×700 to 850 H×412 D mm	348 W×700 to 850 H×475 D mm	498 W×700 to 850 H×605 D mm	273 W×700 to 850 H×507 D mm	348 W×700 to 850 H×570 D mm	498 W×700 to 850 H×700 D mm
Air requirements	0.4 to 0.9 MPa, 30 ℓ /min [A.N.R.]					
Air supply inlet	Nylon tube having external 6 mm dia.					
Protection class	IP66 compliance					
Casing material	Stainless steel (SUS304) excluding some parts					



Option

KW2002AW Printer



Printing Example

Batch, statistics and individual printing

Batch printing and statistics printing are performed after 'Clear statistics'.

Printing of individual screen settings is also performed.

<pre> 1 113.5+* 95.8-* 3 105.6 105.5E 5 112.4 M -***.* W 7 -***.* W 105.9 9 +***.* -***.* 11 96.5--* </pre>	Individual printing	<pre> P2===G.TOTAL===ALL 05 16:23-'01.04.02 17:30 P.Name --- Candy LOT No.--- 12345 BATCH 2 -NG 1.6 % 16 PASS 97.2 % 967 +NG 1.2 % 12 MDNG 0.0 % 0 EXNG 0.0 % 0 TOTAL COUNT 995 TOTAL W. 99.8688kg MEAN 100.371 g STANDARD.D 6.010 g RANGE MEAN 87.900 g MAX.D 6.275 g MIN.D 5.683 g REF.VALUE --- 100.0 g -LIMIT --- -2.5 g +LIMIT --- 10.0 g PRODUCT LENGTH----- 60mm TARE WEIGHT ----- 0.0 g RANK PITCH --- 2.0 g --* 11 7 0 6 0 5* 3 4 0 3 0 2* 2 1*----- 3 0***** 791 1***** 133 2* 13 3* 7 4* 14 5*----- 10 6* 3 7* 2 +* 3 BATCH COUNT ----- 500 INDIVIDUAL CY. -----1 BATCH PRINT C. -----1 </pre>	Total statistics
<pre> P2 '01.04.02 17:30 ALL P.Name --- Candy LOT No.--- 12345 BATCH 2 -NG 1.0 % 5 PASS 96.6 % 478 +NG 2.4 % 12 MDNG 0.0 % 0 EXNG 0.0 % 0 COUNT 495 WEIGHT 49.9533kg MEAN 100.916 g STANDARD.D 5.683 g MAX 123.3 g MIN 21.0 g RANGE 102.3 g REF.VALUE --- 100.0 g -LIMIT --- -2.5 g +LIMIT --- 10.5 g TARE WEIGHT --- 5.0 g </pre>	Batch statistics		
<pre> 01.01 08:25:22 ATCAL 01.01 08:33:05 F.ADJ 001 01.01 09:01:00 START 001 01.01 13:33:51 STOP E011 Photocell error 01.01 14:11:02 START 002 </pre>	History printing		
		<pre> --* 11 7 0 6 0 5* 3 4 0 3 0 2* 2 1*----- 3 0***** 791 1***** 133 2* 13 3* 7 4* 14 5*----- 10 6* 3 7* 2 +* 3 BATCH COUNT ----- 500 INDIVIDUAL CY. -----1 BATCH PRINT C. -----1 </pre>	Histogram (total of all batches)

Anritsu

ANRITSU INDUSTRIAL SOLUTIONS CO., LTD.

INTERNATIONAL SALES DEPARTMENT
 1800, Onna, Atsugi-shi, Kanagawa-Prf., 243-0032, JAPAN
 PHONE +81 46 296 6699
 FAX +81 46 225 8387
 E-Mail: KPOST@anritsu.co.jp
 http://www.anritsu.co.jp/E/Industry/

CAT. NO. K3111-A-1



ISO14001 CERTIFICATE No.JQA-EM0210
 ISO 9001 CERTIFICATE No.JQA-0566
 ©ANRITSU INDUSTRIAL SOLUTIONS CO., LTD. 2004

• In addition to daily inspection, an annual maintenance check should be carried out.

Specifications are subject to change without notice. No part of the whole of this catalog may be reproduced without our permission.

r100 Printed on 100% Recycled Paper

PRINTED WITH SOY INK™ Printed with environment-friendly vegetable soybean oil ink.

2004-10 30 (M) Printed in Japan